

# Women into Green Construction Academy



**COMMENCING**

22<sup>nd</sup> April 2026



**FORMAT**

In-Person ( 1 day per week)



**DURATION**

11 Weeks (9am-5pm)

**100% FULLY  
FUNDED**

**3 x CAREER ENHANCING  
QUALIFICATIONS**

**DIGITAL  
MASTERCLASSES**

**FUTUREPROOF YOUR  
CAREER**

GRASP is a fully funded training programme for the construction industry, supported by PEACEPLUS, a programme managed by the Special EU Programmes Body (SEUPB).

# Empowering Women Upskilling the Supply Chain

## Why Join?

### For the Individual Build your Career



#### Develop Leadership Skills

Gain the formal ILM Level 3 Award in Leadership & Management and acquire the skills to adapt your leadership style, apply proven motivational strategies, and drive project productivity from the front.



#### Lead the Sustainable Transition

As part of the OCN NI Level 3 Award in Sustainable Construction accreditation, you will develop robust knowledge of the core principles of eco-friendly building, including energy efficiency, renewable technologies, sustainable materials, waste minimisation, and the essential environmental regulations that shape the future of the industry.



#### Immerse in Digital Tech

Learn about modern construction tech through hands-on training in BIM compliance, 3D clash detection, and an exclusive Futurecast masterclass on emerging site innovations.

### For the Employer Build your Business



#### De-Risked Pathway

The full Level 3 Certificate is a significant commitment. This Academy provides a de-risked entry point—delivering immediate value and building confidence before participants advance to specialised units.



#### Office & Site Ready Teams

Equip your staff with the regulatory expertise and digital fluency required to secure competitive tenders and execute projects to the highest standards.



#### Zero Financial Risk

The entire programme is 100% fully funded.



The transition to Net Zero is fundamentally reshaping how we design, construct, and manage the built environment. This fully funded, 100-hour Academy is tailored for women at all levels within the construction industry, as well as those in allied professions across the wider built environment - such as facilities management, procurement, and project administration.



# Building the Knowledge Base

*Formal accreditation designed to fast-track your career in sustainable construction and green economy*

## Accredited Qualifications



### OCN NI Level 3 Award in Sustainable Construction

#### Mitigate Regulatory Risk

Confidently navigate the NI environmental regulatory landscape, specifically identifying the implications of Part F (Ventilation), Part L (Fuel & Power), and PAS 2035.

#### Integrate Technologies

Demonstrate a working knowledge of how modern renewable systems (Heat Pumps, Solar PV, MVHR) integrate into the building fabric.

#### Drive Resource Efficiency

Develop strategies for sustainable material selection, construction waste management, and sustainable procurement.

### ILM Level 3 Award in Leadership & Management

#### Step Up to Management

Understand the crucial difference between managing tasks and leading people, giving you the authoritative foundation to lead site, office, or project teams.

#### Build Leadership Confidence

Assess your own personal leadership behaviours and learn how to confidently adapt your style to suit different situations, challenges, and personnel.

#### Motivate & Drive Performance

Master proven motivational strategies to identify what drives your team, resolve workplace demotivation, and boost overall project delivery.

### ISEP Environmental Sustainability Skills for the Workforce

#### Drive Everyday Impact

Master the practical fundamentals of workplace sustainability, empowering you to turn Net Zero targets into everyday, actionable habits that reduce waste and improve efficiency.



*30 hours of hands-on technical workshops.  
These are the universally demanded skills that  
can benefit construction industry employers as  
well as public sector clients.*

## BIM Standards & Processes

Demystify the complex standards that are now a baseline requirement for winning public sector tenders and working on BIM-enabled private developments. Learn how to keep your projects fully compliant.

## VR & Immersive Workflows

Bring your projects to life. Learn the practical steps to set up and execute immersive Virtual Reality walkthroughs.

## BIM Viewer & Reviewer Software

Move beyond 2D paper drawings. Get practical, hands-on training on how to navigate and interrogate federated 3D models. Learn how to conduct digital client reviews, record issues, and perform basic clash detection.

## Emerging Tech Showcase

Look over the horizon. An exclusive masterclass led by our industry partners at Futurecast, exploring the cutting-edge site technologies.

# Your Pathway to Technical Expertise

*The Academy is just the beginning. This is a "Stackable" pathway to becoming a Green Construction leader.*



## Step 1 The Academy

Graduates complete the Academy, securing the OCN Level 3 Award in Sustainable Construction. Crucially, this Award acts as the *Mandatory Unit* for the full Level 3 Certificate.



## The "Stackable" Pathway



NORTH WEST REGIONAL COLLEGE

## Step 2 The Specialisation (Optional Top-Up)

Graduates can return—fully funded by GRASP—to complete the three remaining technical units of the OCN Level 3 Certificate in Sustainable Construction without repeating foundational work.

This pathway provides highly technical upskilling across three core disciplines:

### Compliance & Simulation

Apply rating systems (BREEAM, LEED), simulate building efficiency, and conduct comprehensive Environmental Impact Assessments (EIAs).

### Carbon Auditing & Circular Economy

Conduct cradle-to-grave Life Cycle Assessments (LCAs) to calculate "Embodied Carbon" and implement material reuse strategies.

### System Design & Financial ROI

Master 'Fabric First' building physics and calculate Lifecycle Costs (LCC) to build financial business cases for renewables.

# Lead the Future of Construction

## Logistics & Next Steps

### PROGRAMME DELIVERY AT A GLANCE

Duration: 11 Weeks (22nd April – 1st July 2026)

#### Core Delivery Day (Face-to-Face)

Wednesdays (9:00 AM – 5:00 PM)

- **Mornings (9am - 12pm):** Leadership & Management or Digital Masterclasses.
- **Lunch / Networking (12pm – 1pm)**
- **Afternoons (1pm - 5pm):** Sustainable Construction modules.

*(Note: Week 5 is a full-day Digital Masterclass; Week 11 is the full-day Sustainability in the Workplace Accreditation).*

#### Blended Learning Support (Online)

Mondays (6:00 PM – 8:00 PM)

Flexible, virtual drop-in sessions. Catch up with expert lecturers from home for dedicated support with your coursework and portfolio.

### Who Should Apply?

Designed for women at all levels within the construction industry, as well as those in allied professions across the wider built environment - such as facilities management, procurement, and project administration. If you want to future-proof your career, carve out a bespoke sustainability specialism, or step up into leadership, this fully funded Academy is your launchpad.



NORTH WEST REGIONAL COLLEGE





# REGISTER YOUR INTEREST

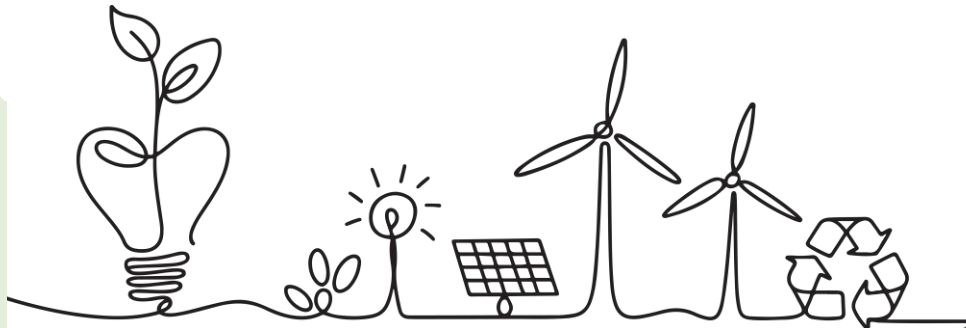
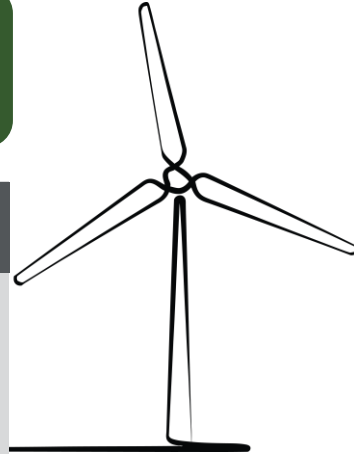
## Contact us



[grasp@nwrac.ac.uk](mailto:grasp@nwrac.ac.uk)



Derry-Londonderry Campus



GRASP is a fully funded training programme for the construction industry, supported by PEACEPLUS, a programme managed by the Special EU Programmes Body (SEUPB).